

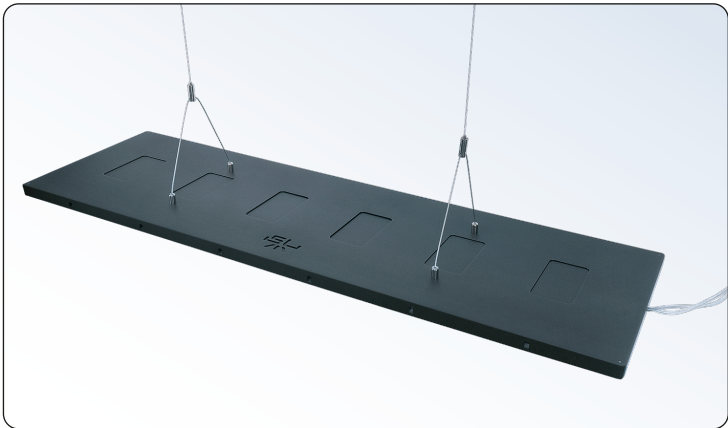
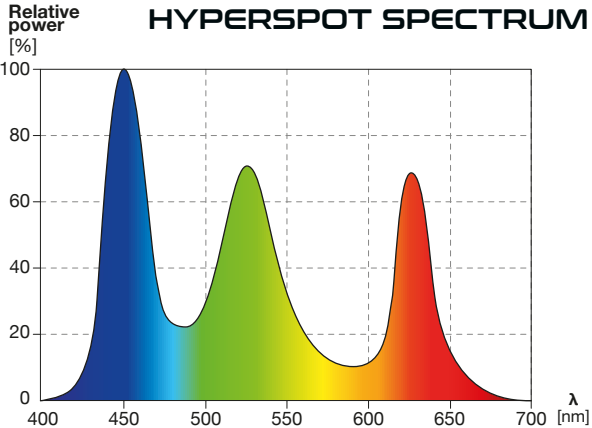


SKYLIGHT HYPERSPOT



- Intense colours
- Limited glaring
- Appropriate for tall aquariums

Each lamp is equipped with hanging suspension kit.
Lamp should be hanged 20-25 cm over the aquarium top.



FEATURES



FOCUSING LENSES

With the help of reflectors the Skylight HYPERSPOT lamps direct almost all available light into the aquarium. RGB LED modules result in vivid, intense colour of the observed inhabitants.



LIMITED GLARING

Observe your aquarium without being blinded. No shades are necessary. Glaring is limited to minimum 360 degrees around the lamp.



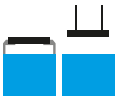
SHIMMER

In contrast to the vast majority of RGB lamps, SKYLIGHT HYPERSPOT lights generate light reflections similar to those appearing, when HQI lamps are used.



COLOUR TEMPERATURE ADJUSTMENT

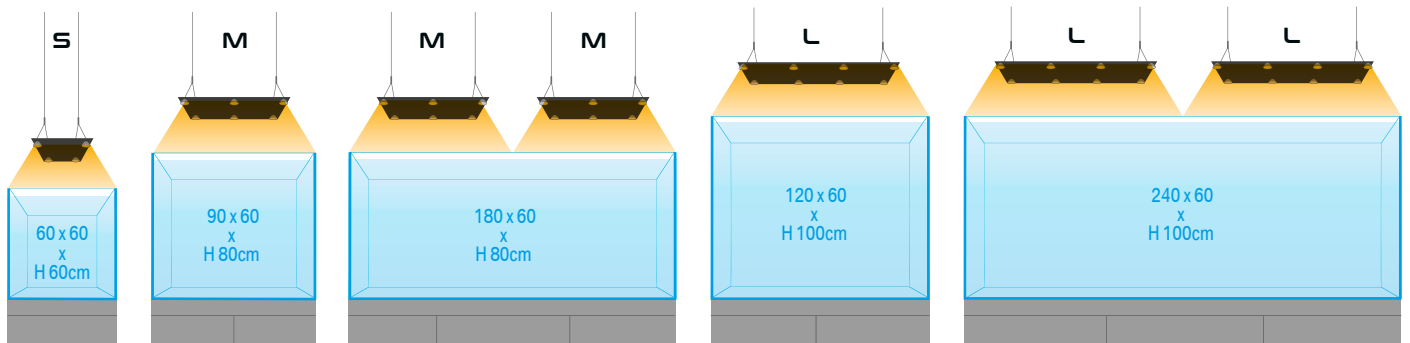
By using an external dimmer the Skylight HYPERSPOT series lamps allow for light output adjustment to current needs. Owing to the 2-channel construction also the colour temperature may be slightly adjusted to better fit the user aesthetic expectations.



MOUNTING FREEDOM

Hyperspot lamps come equipped with a hanging suspension kit, but a number of holders are available as accessories.

RECOMENDATIONS



DIMENSIONS



PARAMETERS

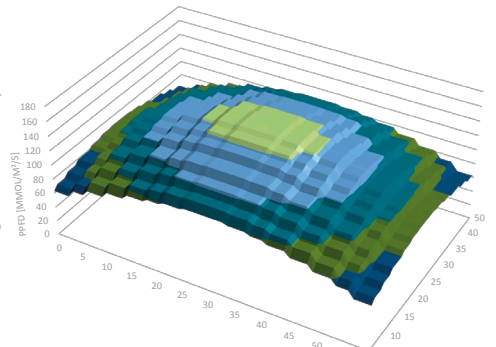
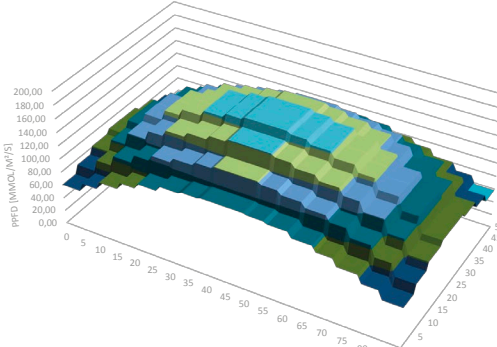
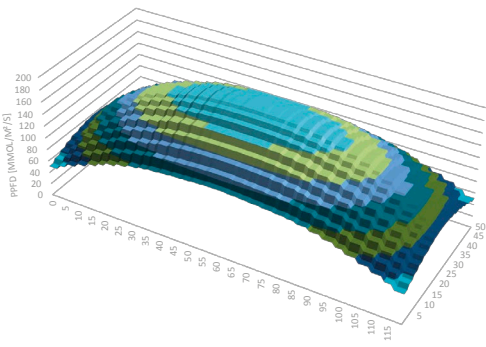
	HYPERSPOT S	HYPERSPOT M	HYPERSPOT L
Dimensions:	349 x 260 mm	625 x 260 mm	902 x 260 mm
Power rating:	48 W	72 W	96 W
Luminous flux:	4500 lm	6750 lm	9000 lm
Colour temperature:	6500 - 9000 K	6500 - 9000 K	6500 - 9000 K
Voltage rating:	12 V DC	12 V DC	12 V DC
Current rating:	4 A	6 A	8 A
Cable length:	2,5 m	2,5 m	2,5 m
Maximum length of the hanging suspension kit:	150 cm	150 cm	150 cm

PHOTOSYNTHETICALLY ACTIVE RADIATION

HYPERSPOT L

HYPERSPOT M

HYPERSPOT S



MEASURED AT 50 CM DISTANCE

PPFD [MMOL/M²/S] ■ 60-80 ■ 80-100 ■ 100-120 ■ 120-140 ■ 140-160 ■ 160-180

OPTIONAL HOLDERS

